



Oberon
COLLECTION

SAMUEL & SONS





Oberon is an exquisite collection of passementerie woven with the finest metal yarns. Offered in six hues of metal, the collection is composed of a 1.25" Oberon Beaded Fringe, a 2" Oberon Teardrop Beaded Fringe and an elaborate 4" Triple Beaded Fringe. In addition to the Oberon 2" Tassel Fringe, there are 4.75" and 8.25" Bullion Fringe Complementing the fringes are both woven and twisted cords, which transcend time and is suitable in both traditional and contemporary applications.

Shown clockwise: Braid, Triple Beaded Fringe and Cord in Zinc



Shown from top to bottom: Double Quilles Tieback in Zinc, Rosette and Double Tassel Tieback in Zinc and Key Tassel in colors: Platinum, White Gold, Goldleaf, Antique Gold, Zinc and Bronze

On the cover: Constellation Border in Steel, Teardrop Fringe in Zinc, Beaded Fringe in Platinum, Woven Cord with Tape and Bullion Fringe in Zinc

The **Double Tassel Tieback** and **Key Tassel** have sleek bullion skirts and finely wrapped tapered molds with an overlay of hand-tied netting that have been loomed with the finest denier metal yarns. A complementary **Rosette** completes this ensemble. Among the signature pieces in the collection is the **Double Quilles Tieback** which features an ornate series of round and tapered molds with overlays of finely knotted netting.

OBERON

The Oberon Collection exudes luxury in the realm of traditional grandeur and exquisite detailing while at the same time using the minimalist simplicity of fine metal thread to articulate the most innovative contemporary borders. The ethereal nature of the materials used in this collection and versatility in interpretation make this an exquisite part of any designer's library.

Eclipse Border in Onyx

The **Mercury** and **Eclipse** borders, though minimalist in character, have surfaces that appear to have been gilded in silver and gold.

The pattern of hand-tied satin knots in the **Constellation Border** is derived from an abstraction of star positions in the night sky.

The extraordinarily sculptural character of the **Orbit Border** is created through a series of laser cut, matte metallic oval foils with hollowed centers that are appliquéd to a finely woven twill border.

*Shown from left to right:
3/8" (9mm) Twisted Cord
with Tape in Antique Gold
and Orbit Border in White Gold.*



Constellation Border in Steel

The **Oberon Crete** is an open weave created through a series of concentric circles of guiperes, while the **Oberon Braid**'s small cords form a geometric ogee pattern that glides across its finely woven ribbed ground. An intricate 1/2" **Gimp** and a lush 1" **Brush Fringe** complete this assortment.

The **Solar Border** is an abstract hand block print with embroidered metallic silhouettes.

Shown clockwise on the opposite page: Double Tassel Tieback in White Gold, Brush Fringe and Crete in Zinc, Rosettes in Goldleaf, Platinum, Bronze, Zinc and Antique Gold; Double Quilles Tieback in Antique Gold, Key Tassel in Bronze, Solar Border in Mica, 3/8" (9mm) Twisted Cord with Tape in Platinum and Beaded Fringe in Antique Gold.



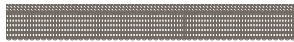
Orbit Border in White Gold

The collection houses a compendium of unique, documentary-inspired patterns and a series of 21st century designs employing innovative appliqué, velvet and hand knotting techniques.



*Shown from left to right:
Teardrop Fringe and Saturn Striped Border
in Zinc, and Luna Border in Stardust.*

Oberon Collection



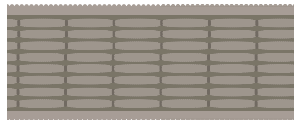
CT-57880 1/8" (4mm)
Woven Cord with Tape
Available in: *Platinum, Zinc, Bronze, White Gold, Goldleaf, Antique Gold*



BT-57868 2" (51mm)
Orbit Border
Available in: *White Gold, Bronze*



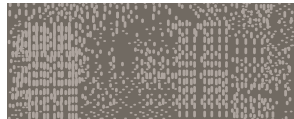
BT-57869 3" (76mm)
Solar Border
Available in: *Mica*



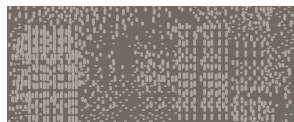
BT-57872 2.44" (62mm)
Saturn Striped Border
Available in: *Platinum, Zinc, Goldleaf*



BT-57867 2.25" (57mm)
Constellation Border
Available in: *Platinum, Steel*



BT-57871 2.44" (62mm)
Mercury Border
Available in: *Steel*



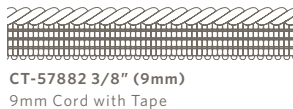
BT-57900 2.44" (62mm)
Eclipse Border
Available in: *Onyx*



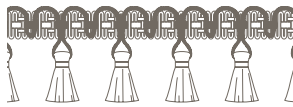
BT-57870 2.75" (70mm)
Luna Border
Available in: *Moondust, Stardust*



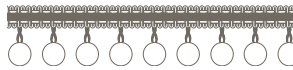
CT-57881 1/4" (5mm)
5mm Cord with Tape
Available in: *Platinum, Zinc, Bronze, White Gold, Goldleaf, Antique Gold*



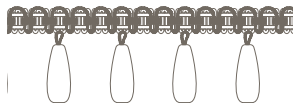
CT-57882 3/8" (9mm)
9mm Cord with Tape
Available in: *Platinum, Zinc, Bronze, White Gold, Goldleaf, Antique Gold*



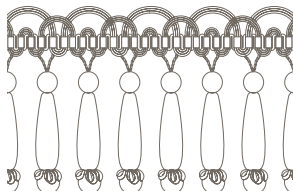
TF-57873 2" (51mm)
Tassel Fringe
Available in: *Platinum, Zinc, Bronze, White Gold, Goldleaf, Antique Gold*



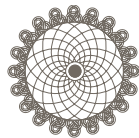
TF-57877 1.25" (32mm)
Beaded Fringe
Available in: *Platinum, Zinc, Bronze, White Gold, Goldleaf, Antique Gold*



TF-57874 2" (51mm)
Teardrop Fringe
Available in: *Platinum, Zinc, Bronze, White Gold, Goldleaf, Antique Gold*



TF-57878 4" (10cm)
Triple Beaded Fringe
Available in: *Zinc, Goldleaf, Antique Gold*



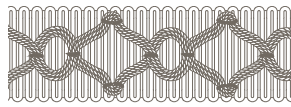
RT-57887 2.75" (70mm)
Rosette
Available in: *Platinum, Zinc, Bronze, White Gold, Goldleaf, Antique Gold*



GB-57889 1/2" (13mm)
Gimp
Available in: *Platinum, Zinc, Bronze, White Gold, Goldleaf, Antique Gold*



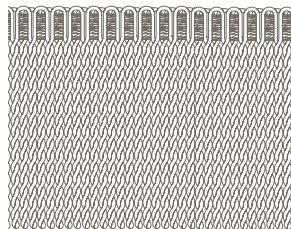
BR-57879 1" (25mm)
Brush Fringe
Available in: *Platinum, Zinc, Bronze, White Gold, Goldleaf, Antique Gold*



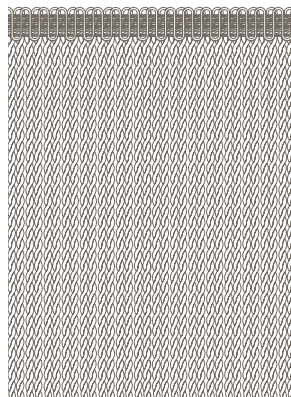
BT-57884 2" (51mm)
Braid
Available in: *Platinum, Zinc, Bronze, White Gold, Goldleaf, Antique Gold*



GB-57883 2.5" (64mm)
Crete
Available in: *Platinum, Zinc, Bronze, White Gold, Goldleaf, Antique Gold*



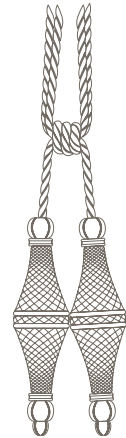
BU-57876 4.75" (12cm)
Bullion Fringe
Available in: *Platinum, Zinc, Bronze, White Gold, Goldleaf, Antique Gold*



BU-57875 8.25" (21cm)
Bullion Fringe
Available in: *Platinum, Zinc, Bronze, White Gold, Goldleaf, Antique Gold*



KT-57888 5.5" (14cm)
Key Tassel
Available in: *Platinum, Zinc, Bronze, White Gold, Goldleaf, Antique Gold*



TT-57885 9" (23cm)
Double Quilles Tieback
Available in: *Zinc, Goldleaf, Antique Gold*



TT-57886 11" (28cm)
Double Tassel Tieback
Available in: *Platinum, Zinc, Bronze, White Gold, Goldleaf, Antique Gold*

Special thanks to Weitzner fabrics

